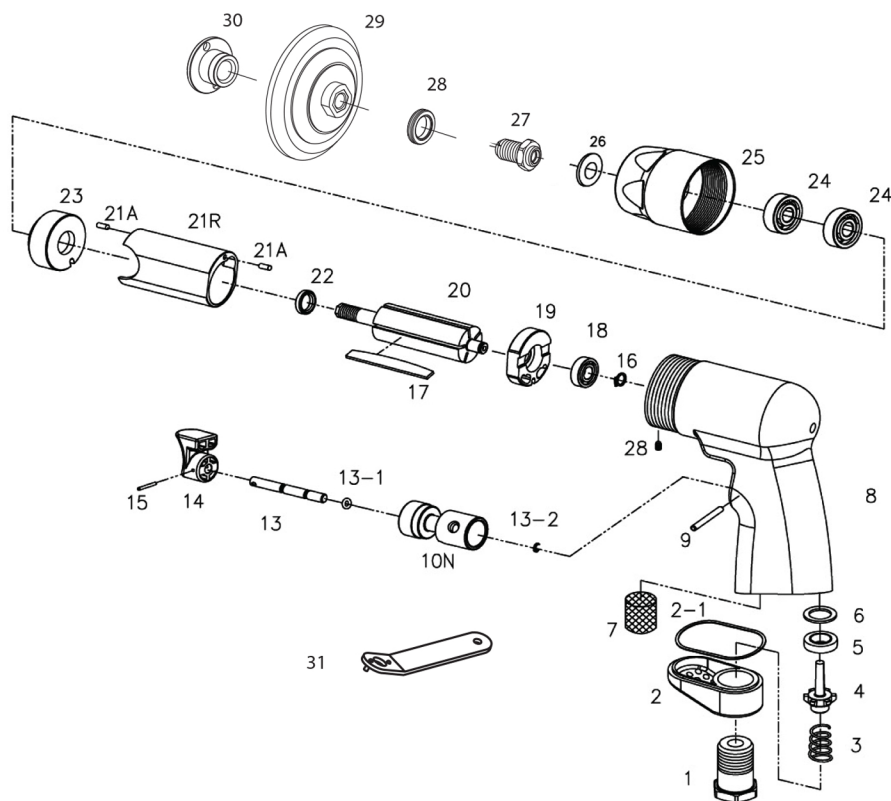




### Specifications

|                                 |                                   |
|---------------------------------|-----------------------------------|
| Disc Capacity .....             | 4-1/2"                            |
| Free speed.....                 | 20,000 RPM                        |
| Spindle thread.....             | 3/8"-24 Internal; 5/8-11 External |
| Weight.....                     | 2.1 lbs.                          |
| Length.....                     | 6.5"                              |
| Average air consumption.....    | 4 CFM                             |
| Recommended hose size.....      | 3/8" I.D.                         |
| Inlet size.....                 | 1/4" NPT                          |
| Maximum operating pressure..... | 90 PSI                            |



| Ref. | Description   | Part #      | Ref. | Description      | Part #      |
|------|---------------|-------------|------|------------------|-------------|
| 1    | Air Inlet     | 9389501     | 17   | Rotor Blades (5) | 9389517     |
| 2    | Deflector     | 9389502     | 18   | Ball Bearing     | 9389518     |
| 2-1  | Gasket        | 9389502-1   | 19   | Rear Plate       | 9389519     |
| 3    | Spring        | 9389503     | 20   | Rotor            | 9389720-20K |
| 4    | Valve         | 9328804VN   | 21   | Cylinder         | 9389521     |
| 5    | Valve Seat    | 9328835N    | 21A  | Pin (2)          | 9389521A    |
| 6    | Spacer        | 9328825SN   | 22   | Spacer           | 9389735     |
| 7    | Silencer      | 9389507     | 23   | Front Plate      | 9389723-20K |
| 8    | Housing       | 9389708-20K | 24   | Ball Bearing (2) | 9BBR-6      |
| 9    | Dowel Pin     | 9389509     | 25   | Front Case       | 9389733-20k |
| 10N  | Valve Bushing | 9389510N    | 26   | Washer           | 9389737     |
| 13   | Valve Stem    | 9389513     | 27   | Spindle          | 8240502     |
| 13-1 | O-Ring        | 9638013     | 28   | Spacer           | 107085      |
| 13-2 | Retainer      | 9389513-2   | 29   | Backing Pad      | 8731785     |
| 14   | Trigger       | 9389514     | 30   | Lock Nut         | 9825SSH     |
| 15   | Spring Pin    | 9389515     | 31   | Spanner          | 97042-34    |
| 16   | Retainer      | 9389516     |      |                  |             |

### Limited Warranty

Universal Tool warrants its tools to be free from defects in material and workmanship for one year from the date of purchase. This warranty does not apply to tools which have been abused, misused, modified or repaired by someone other than Universal Tool or its authorized service centers. If a Universal Tool proves defective in material or workmanship within one year after purchase, return it to any authorized service center or to Universal Tool, freight prepaid. Please enclose your name, address and adequate proof of purchase date with a brief description of the defect. Universal Tool will, at its option, repair or replace defective tools, free of charge. Repairs or replacements are warranted as described above for the remainder of the warranty period. Universal Tool's sole liability and your exclusive remedy under this warranty is limited to repair or replacement of the defective tool. There are no other warranties expressed or implied and Universal Tool shall not be liable for incidental, consequential or special damages, or any other damages, costs or expense of repair or replacement as described above.