



**PLEASE READ AND FOLLOW ALL WARNINGS**



**Universal Tool**

UT8942

**RIVNUT SETTING TOOL**

### Read Operating Instructions

Always become familiar with all the instructions and warnings before operating any power tool.

### Always Wear Approved

#### Eye Protection

Impact resistant eye protection should meet or exceed the standards as set forth in the United States ANSI Z87.1, Occupational and Educational Eye and Face Protection. Look for the marking Z87.1 on your eye protection to insure that it is an approved style. For further information, ANSI Z87.1, Occupational and Educational Eye and Face Protection, is available from the American National Standards Institute, Inc., 11 West 42nd Street, New York, NY 10036.

#### Hearing Protection is Recommended

Hearing protection should be used when the noise level exposure equals or exceeds an 8 hour time-weighted average sound level of 85 dBA. Process noise, reflective surfaces, other tools being operated nearby, all add to the noise level present in your work area. If you are unable to determine your noise level exposure, we recommend the use of hearing protection.

#### Avoid Prolonged Exposure to Vibration

Tools can vibrate during use. Prolonged exposure to vibration or very repetitive hand and arm movements, can cause injury. Stop using any tool if discomfort, tingling feeling or pain occurs. You should consult your physician before resuming use of the tool.

#### 90 PSIG Maximum

This tool is designed to operate at

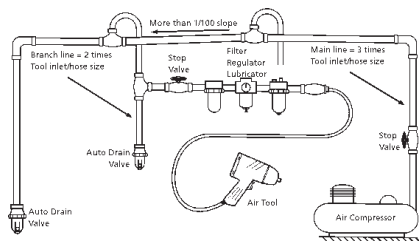
an air pressure of 90 pounds per square inch gauge pressure (90 PSIG) maximum, at the tool. Use of higher air pressure can, and may cause injury. Also, the use of higher air pressure places the internal components under loads and stresses they were not designed for, causing premature failure. The air supply should be clean and dry, preferably lubricated. For best results, drain the moisture from your compressor daily.

#### WARNING:

Some dust created by power sanding, sawing, grinding, drilling, and other construction activities contains chemicals known to cause cancer, birth defects or reproductive harm. Some examples of these chemicals are:

- Lead from lead-based paints
- Crystalline silica from bricks, cement and other masonry products
- Arsenic and chromium from chemically treated lumber

Your risk from these exposures varies, depending on how often you do this type of work. To reduce your exposure to these chemicals, work in a well-ventilated area and work with approved safety equipment such as those dust masks that are specially designed to filter out microscopic particles.



### Description

Universal Tool Air Riveter Nut Tool is designed to set ribbed rivet nuts, hex body rivet nuts, and threaded inserts in S.A.E. and metric sizes.



### Safety Instructions

The following instructions are furnished as general guidelines for use of your pneumatic tool. They cannot comprehensively cover all possible or conceivable uses of the subject tool. For additional information on the safe use of air tools, we advise you to obtain a copy of ANSI B186.1 Safety Code for Portable Air Tools, available from the following source:

American National Standards Institute, Inc.

11 West 42nd Street  
New York, NY 10036.

The use of the word "shall" in the following instructions, indicates that adherence to the particular requirement is necessary to conform to ANSI B186.1.

### Tool Application and Usage

Portable tools shall be used only for the purposes intended in their design and within the capacity for which they were intended and rated. It shall be the tool owner's and/or employer's responsibility to instruct each operator in the safe use of the tool. Tools shall not be used without guards and safety

devices as furnished by the manufacturer. Where an air tool is modified or altered, the modifier shall provide the safeguards to enable it to be safely used in the operations intended and to comply with any applicable provisions as contained in ANSI B186.1.

### Tool Installation

Pressure regulators shall be used to limit air pressure to the rated pressure where the supply pressure exceeds the tool's rated pressure. Air hoses and lines shall be relieved of compressed air before being disconnected or disjointed, unless there is automatic valve closing protection at the joint being separated. Synthetic lubricants which can cause deterioration of elastomer seals shall not be used in air systems of air tools.

### Tool Maintenance

It shall be the tool owner's and/or employer's responsibility to assure that tools are maintained in a safe operating condition. Tool maintenance and repair shall be performed by authorized, trained, competent personnel. Tools shall be disconnected from their compressed air supply before repairs are attempted. Repairs shall be consistent with the manufacturer's recommended procedures. Tool, hoses and fittings shall be replaced if unsuitable for safe operation. It shall be the tool owner's and/or employer's responsibility to keep required rating markings and warnings on the tool in legible condition.

*Read these instructions carefully before attempting to install, operate or service this Florida Pneumatic product. Failure to comply with the instructions could result in personal injury and/or property damage! Retain these instructions for future reference.*

**FPMC**

Universal Tool

A Division of Florida Pneumatic Manufacturing Corporation

851 Jupiter Park Lane, Jupiter, Florida 33458

Toll Free 1-800-327-9403



**Universal Tool**

UT8942

RIVNUT SETTING TOOL

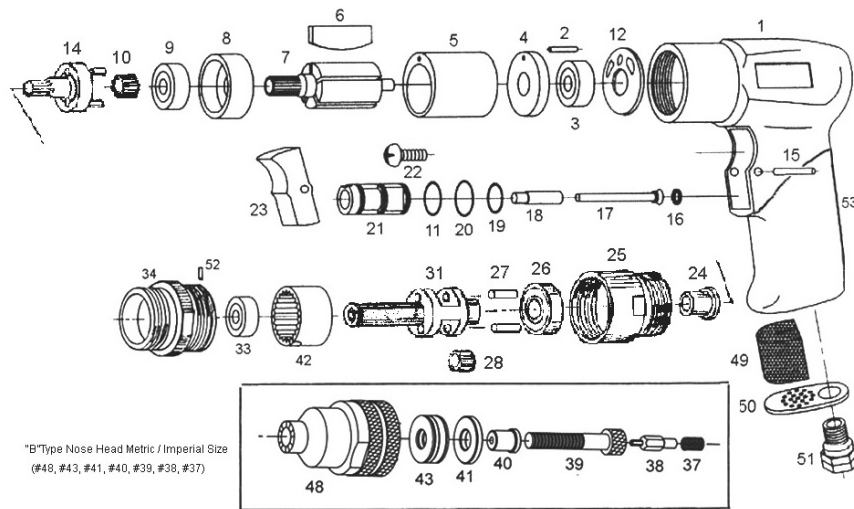


**Universal Tool**

UT8942

RIVNUT SETTING TOOL

Model	Motor (HP)	Motor (kW)	Torque Range (ft. lb.)	Speed (RPM)	Exhaust	Head Size and Setting Capacity	Weight (lb.)	Weight (Kg)	Length (in.)	Length (mm)	Rec. Pressure	Air Inlet (NPT)	Rec. Hose (I.D. in.)	Air Cons (cfm)	Av. Air Cons (cfm)
UT8942	0.4	0.29	NA	600	Handle	4, 5, 6mm 1/4"-20, #8-32, #10-24, #10-32	2.8	1.3	7.25	184	90 psi-6.2 bar	1/4"	3/8"	16	4.0



"B"Type Nose Head Metric / Imperial Size  
(#48, #43, #41, #40, #39, #38, #37)

Index NO.	Part NO.	Description	NO. Req'd	Index NO.	Part NO.	Description	NO. Req'd
1	9350010	Motor Housing	1	39	9M04007	Bolt M4	1
2	9P2514	Spring Pin	1		9M05008	Bolt M5	1
3	925004	Ball Bearing	1		9M06010	Bolt M6	1
4	925003	Rear Plate	1		9W08032	Bolt 8-32	1
5	935009	Cylinder	1		9W10024	Bolt 10-24	1
6	925007	Rotor Blade	5		9W10032	Bolt 10-32	1
7	935002A	Rotor	1	40	9W14020	Bolt 1/4"-20	1
8	925008	Front Plate	1		960094	Bushing #4	1
9	925023	Ball Bearing	1		960095	Bushing #5	1
10	935018B	Planet Gear	3		960096	Bushing #6	1
11	910445	O-Ring	2		960094	Bushing 6-32, 8-32	1
12	923211	Motor Gasket	1		960095	Bushing 10-24, 10-32	1
14	960011A	Planet Cage (15T) + Pin	1	41	96009614	Bushing 1/4"-20	1
15	925018B	Roll Pin	1		960063	Washer #3-#6	1
16	935016	O-Ring	2	42	960063	Washer 6-32, 8-32, 10-24, 10-32, 1/4"-20	1
17	935007	Valve Stem	2	43	935012A	Internal Gear	1
18	935006	Sleeve	2		935065	Needle Bearing #3-#8	1
19	935039	O-Ring	2	48	935065	Needle Bearing 6-32, 8-32, 10-24, 10-32, 1/4"-20,	1
20	935003	O-Ring	2		960004M	Nut Anvil #4	1
21	935005	Throttle Bushing	2		960005M	Nut Anvil #5	1
22	935004	Screw	1		960006M	Nut Anvil #6	1
23	935002	Trigger	1		960004M	Nut Anvil 8-32	1
24	990016A	Bushing	1		960005M	Nut Anvil 10-24, 10-32	1
25	935015A	Housing	1	49	96001-4-20	Nut Anvil 1/4"-20	1
26	935060	Ball Bearing	1		935049	Muffler	1
27	935059	Planet Pin	2	50	935062	Diffuser Exhaust	1
28	990014B	Planet Gear (18T)	2	51	935061	Air Inlet Bushing	1
31	990010W	Planet Cage	1	52	935029	Pin	1
33	935069	Ball Bearing	1	53	982162	Rubber Sleeve	1
34	935014F	Screw Housing	1	***ACCESSORIES***			
37	935076	Spring	1	*	9350W34	Wrench 34mm	1
38	9600004	Hexagon Bit #4	1	*	9350W38	Wrench 38mm	1
	9600005	Hexagon Bit #5	1	* Not Show n			
	9600006	Hexagon Bit #6	1				
	9600832	Hexagon Bit 8-32	1				
	9601024	Hexagon Bit 10-24	1				
	9601032	Hexagon Bit 10-32	1				
	9601420	Hexagon Bit 1/4"-20	1				

## Limited Warranty

Universal Tool warrants its tools to be free from defects in material and workmanship for one year from the date of purchase. This warranty does not apply to tools which have been abused, misused, modified or repaired by someone other than Universal Tool or its authorized service centers. If a Universal Tool proves defective in material of workmanship within one year after purchase, return it to any authorized service center or to Universal Tool, freight prepaid. Please enclose your name, address and adequate proof of purchase date with a brief description of the defect. Universal Tool will, at its option, repair or replace defective tools, free of charge. Repairs or replacements are warranted as described above for the remainder of the warranty period. Universal Tool's sole liability and your exclusive remedy under this warranty is limited to repair or replacement of the defective tool. There are no other warranties expressed or implied and Universal Tool shall not be liable for incidental, consequential or special damages, or any other damages, costs or expense of repair or replacement as described above.