



PLEASE READ AND FOLLOW ALL WARNINGS



Universal Tool

UT8963AT-17

**PUSH TO START
AUTO SHUTOFF SCREWDRIVER**

Read Operating Instructions

Always become familiar with all the instructions and warnings before operating any power tool.



Always Wear Approved Eye Protection

Impact resistant eye protection should meet or exceed the standards as set forth in the United States ANSI Z87.1, Occupational and Educational Eye and Face Protection. Look for the marking Z87.1 on your eye protection to insure that it is an approved style. For further information, ANSI Z87.1, Occupational and Educational Eye and Face Protection, is available from the American National Standards Institute, Inc., 11 West 42nd Street, New York, NY 10036.



Hearing Protection is Recommended

Hearing protection should be used when the noise level exposure equals or exceeds an 8 hour time-weighted average sound level of 85 dBA. Process noise, reflective surfaces, other tools being operated nearby, all add to the noise level present in your work area. If you are unable to determine your noise level exposure, we recommend the use of hearing protection.



Avoid Prolonged Exposure to Vibration

Tools can vibrate during use. Prolonged exposure to vibration or very repetitive hand and arm movements, can cause injury. Stop using any tool if discomfort, tingling feeling or pain occurs. You should consult your physician before resuming use of the tool.



90 PSIG Maximum

This tool is designed to operate at

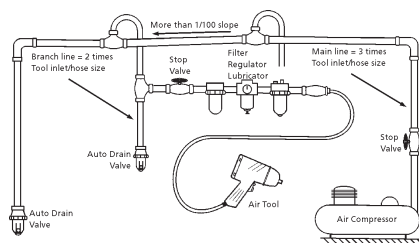
an air pressure of 90 pounds per square inch gauge pressure (90 PSIG) maximum, at the tool. Use of higher air pressure can, and may cause injury. Also, the use of higher air pressure places the internal components under loads and stresses they were not designed for, causing premature failure. The air supply should be clean and dry, preferably lubricated. For best results, drain the moisture from

WARNING:

Some dust created by power sanding, sawing, grinding, drilling, and other construction activities contains chemicals known to cause cancer, birth defects or reproductive harm. Some examples of these chemicals are:

- Lead from lead-based paints
- Crystalline silica from bricks, cement and other masonry products
- Arsenic and chromium from chemically treated lumber

Your risk from these exposures varies, depending on how often you do this type of work. To reduce your exposure to these chemicals, work in a well-ventilated area and work with approved safety equipment such as those dust masks that are specially designed to filter out microscopic particles.



Description

Universal Tool 1/4" QC screwdriver has an ergonomic handle design for reduced operator fatigue. Features a variable speed trigger and reverse for controlled operation. Ideal for general assembly and maintenance operation. The user now has the option of push to start operation by keeping the trigger depressed, or trigger start operation by depressing the trigger after the tool has been held against the fastener. Rotation of the fastener stops when the clutch reaches the set torque. Removing the tool from the fastener or releasing the trigger will reset the tool for the next cycle



Safety Instructions

The following instructions are furnished as general guidelines for use of your pneumatic tool. They cannot comprehensively cover all possible or conceivable uses of the subject tool. For additional information on the safe use of air tools, we advise you to obtain a copy of CAGI B186.1-2009 Safety Code for Portable Air tools from the following source:

COMPRESSED AIR AND GAS INSTITUTE

1300 Sumner Avenue Cleveland, OH 44115-2851 PH: (216) 241 7333
www.cagi.org
Or from Florida Pneumatic MFG Corp
851 Jupiter Park Lane Jupiter, FL 33458 PH: (561) 744 9500

The use of the word "shall" in the following instructions, indicates that adherence to the particular requirement is necessary to conform to CAGI B186.1-2009.

Tool Application and Usage

Portable tools shall be used only for the purposes intended in their design and within the capacity for which they were intended and rated. It shall be the tool owner's and/or employer's responsibility to instruct each operator

in the safe use of the tool. Tools shall not be used without guards and safety devices as furnished by the manufacturer. Where an air tool is modified or altered, the modifier shall provide the safeguards to enable it to be safely used in the operations intended and to comply with any applicable provisions as contained in CAGI B186.1-2009.

Tool Installation

Pressure regulators shall be used to limit air pressure to the rated pressure where the supply pressure exceeds the tool's rated pressure. Air hoses and lines shall be relieved of compressed air before being disconnected or disjointed, unless there is automatic valve closing protection at the joint being separated. Synthetic lubricants which can cause deterioration of elastomer seals shall not be used in air systems of air tools.

Tool Maintenance

It shall be the tool owner's and/or employer's responsibility to assure that tools are maintained in a safe operating condition. Tool maintenance and repair shall be performed by authorized, trained, competent personnel. Tools shall be disconnected from their compressed air supply before repairs are attempted. Repairs shall be consistent with the manufacturer's recommended procedures. Tool, hoses and fittings shall be replaced if unsuitable for safe operation. It shall be the tool owner's and/or employer's responsibility to keep required rating markings and warnings on the tool in legible condition.

Universal Tool
A Division of Florida Pneumatic Manufacturing Corporation
851 Jupiter Park Lane, Jupiter, Florida 33458
Toll Free 1-800-327-9403

Read these instructions carefully before attempting to install, operate or service this Florida Pneumatic product. Failure to comply with the instructions could result in personal injury and/or property damage! Retain these instructions for future reference.

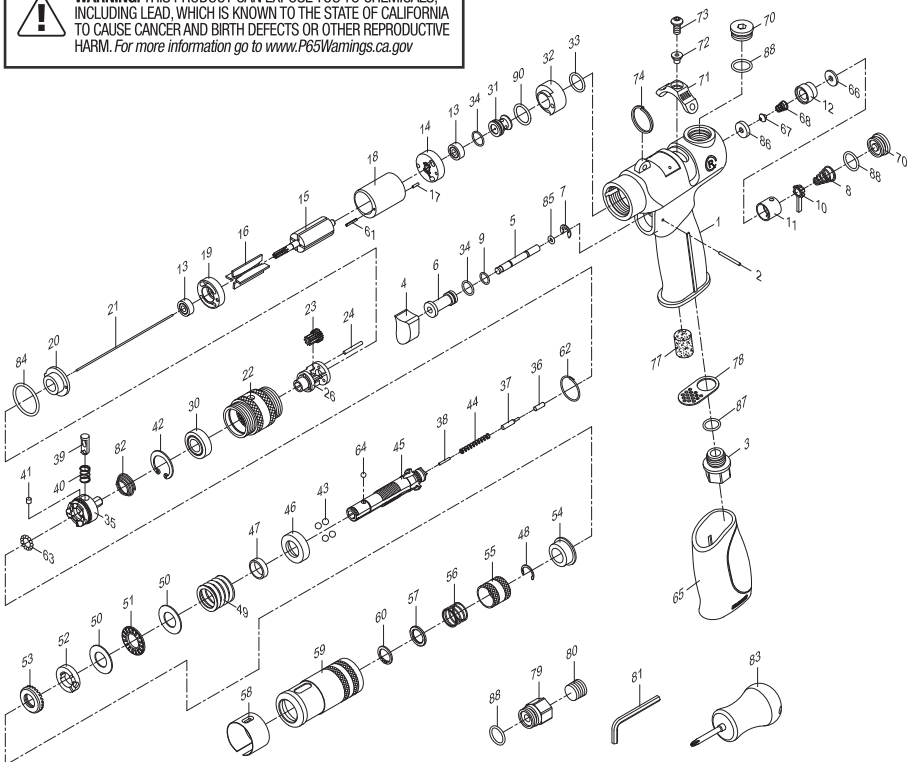
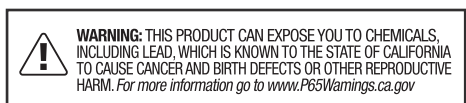
FPMC

Drive size1/4" QC
Free speed (No load).....1700 RPM
Torque (green spring)5-19 in/lbs.
Torque (black spring) 10-38 in/lbs.
Torque (yellow spring) 15-45 in/lbs.
Weight1.98 lbs.
Overall length8.65"
Average air consumption4 CFM
Recommended hose size3/8" I.D.
Air inlet1/4" NPT
Maximum operating pressure90 psi

Parts Breakdown for UT8963AT-17

USE ONLY IMPACT SOCKETS & ACCESSORIES

Sockets and accessories used shall be of the impact socket type. Always check sockets, retainers and drives regularly for wear or damage and replace whenever necessary



Replacement Parts for UT8963AT-17

Ref.	Description	Part #	Ref.	Description	Part #
1	Motor Housing	9AS00401	46	Cover	9000055
2	Spring Pin	920448	47	Bushing	9000056
3	Air Inlet	9AS00503	48	C-Ring	9000057
4	Trigger	9AS00404	49	Spring	9000058
5	Valve Stem	9AS00405	50	Thrust Race (2)	9000059
6	Valve Bushing	9AS00406	51	Roller Thrust Bearing	9000060
7	Retaining Ring	9AS00447	52	Adjustment Lock Ring	9000061
8	Valve Spring	9AS00408	53	Adjustment Nut	9000062
9	O-Ring	9516114	54	Spindle Bushing	9000063
10	Valve Stem	9AS00410	55	Ball Retainer	9000064
11	Valve Bushing	9AS00411	56	Spring	9000065
12	Shut-off Valve Bushing	9AS00412	57	Washer	9000066
13	Ball Bearing (2)	9000022	58	Adjustment Cover	9000067
14	End Plate	9000023	59	Clutch Housing	9000068
15	Rotor	9AS00415	60	Retaining Ring	9000069
16	Rotor Blades (4)	9000025	61	Spring Pin	9000070
17	Spring Pin	9000026	62	Retainer Ring	9000071
18	Cylinder	9000027	63	Steel Ball (13)	9000072
19	Front End Plate	9000028	64	Steel Ball	9000073
20	Motor Spacer	9AS00420	65	Rubber Grip	9AS00452
21	Push Needle	9AS20234	66	Shut-off Valve Seat	9AS00509
22	Internal Gear	9AS00422	67	Shut-off Valve	9AS00510
23	Planet Gear (3)	9AS00423	68	Shut-off Valve Spring	9AS00508
24	Pin (3)	9AS00424	70	Valve Cap (2)	9AS00409
26	Work Spindle	9AS00426	71	Reversing Valve Knob	9AS00421
30	Ball Bearing	9000039	72	Reversing Knob Spacer	9AS00433
31	Inlet Noose	9000040	73	Screw	9AS00432
32	Reverse Valve	9000041	74	Ring	9000083
33	O-Ring	9000042	77	Damping Material	9000086
34	O-Ring (2)	9000043	78	Exhaust Diffuser	9AS00407
35	Clutch	9000044	79	Air Inlet	9AS00403
36	Pin	9000045	80	Set Screw	910213
37	Reset Pin	9000046	81	Hex. Wrench	910020
38	Pin	9000047	82	Spring	9000097
39	Trip Slide	9000048	83	Screwdriver	9AS000163
40	Spring	9000049	84	O-Ring	952235
41	Plug	9000050	85	O-Ring	9OR00200100
42	Internal Ring	9000051	86	Shut-off Valve Seat	9AS00427
43	Steel Ball (4)	9000052	87	O-Ring	9OR01007105
44	Spring	9000053	88	O-Ring (3)	9AS000109
45	Cam Spindle	9000054	90	O-Ring	9OR02000100

Limited Warranty

Universal Tool warrants its tools to be free from defects in material and workmanship for one year from the date of purchase. This warranty does not apply to tools which have been abused, misused, modified or repaired by someone other than Universal Tool or its authorized service centers. If a Universal Tool proves defective in material of workmanship within one year after purchase, return it to any authorized service center or to Universal Tool, freight prepaid. Please enclose your name, address and adequate proof of purchase date with a brief description of the defect. Universal Tool will, at its option, repair or replace defective tools, free of charge. Repairs or replacements are warranted as described above for the remainder of the warranty period. Universal Tool's sole liability and your exclusive remedy under this warranty is limited to repair or replacement of the defective tool. There are no other warranties expressed or implied and Universal Tool shall not be liable for incidental, consequential or special damages, or any other damages, costs or expense of repair or replacement as described above.